

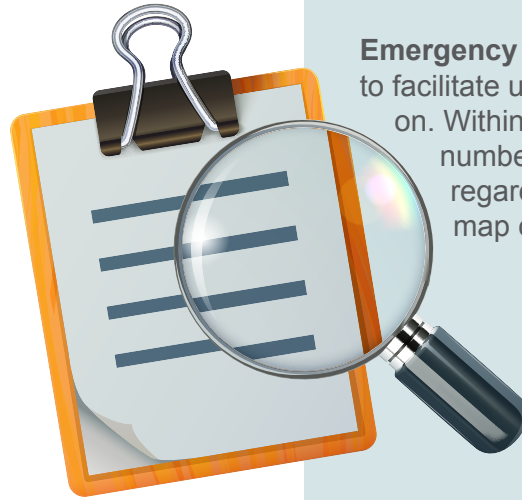
## Distribution Tariff

### What's it all About?

There are three components to the delivery of electricity in Alberta: generation, transmission and distribution. Distribution charges cover the cost of moving electricity from transmission lines through lower voltage lines to the end user. Distribution charges invariably are higher for rural Albertans versus urban dwellers because of lower population density and longer distances between end-user sites.

The Alberta Utilities Commission (AUC) regulates distribution rates for the large for-profit utility corporations, municipally owned electric utility rates are approved by local municipal governments and Rural Electrification Associations (REAs) have Boards, elected by their members, which approve Distribution Tariffs (DT) on behalf of those members. The DT covers many facets of the delivery and management of the REA including, but not limited to:

Our goal, as your Board of Directors, is to safeguard the future success of the West Wetaskiwin REA and to ensure our members receive reliable, cost efficient electricity delivery. In establishing the current DT we had to consider the increased vegetation management cost to retain system reliability and the increased cost for pole changes and legal fees. The end result was the need for a fair increase to continue our financially stable status. That increase is 5% and reflected in the table on the following page.



**Emergency response** from powerline technicians to facilitate unplanned repairs to keep the power on. Within this activity is the 24-hour toll free number to respond to calls from members regarding outages, etc., and the outage map on the website [www.brpower.coop](http://www.brpower.coop).

**Ongoing repairs and maintenance** keeps the system in sound working order. This includes activities like pole testing and pole replacement on a regular basis. Currently this occurs on a rotational basis, pole testing in an area in one year determines how many replacements will be required the following year.

**Vegetation management** is a critical activity to keep our system reliable and we continue to work with our system operator to find ways to keep this cost as low as possible.

**Board of Director and administrative expenses** to manage the REA. Directors incur costs when meeting regularly to make decisions on behalf of the REA and to attend external meetings and events. Administration includes work fulfilled by the office manager and regular office expenses including phone and website.

**Professional fees** are a budget line item and include the annual audit and financial reporting, miscellaneous communications support and currently the additional legal costs to counter the application to the AUC by Fortis for rate increases they claim results partly from our intermingled systems.

#### For Power Troubles:

Battle River Power Coop (our distribution system operator)  
Toll-free: 1-877-428-3972

#### For RRO Billing and Account Inquiries:

Battle River Power Coop | Box 1420 Camrose, Alberta T4V 1X3  
Toll-free: 1-877-428-3972  
E-mail: [brpc@brpower.coop](mailto:brpc@brpower.coop) | Website: [www.brpower.coop](http://www.brpower.coop)

#### For REA Inquiries, New Service and Service Change Requests:

Contact West Wetaskiwin REA, RR #1  
Station Main, Wetaskiwin, Alberta T9A 1W8  
Tel: 780-335-9378 (WEST)

E-mail: [westwet@telus.net](mailto:westwet@telus.net) | Website: [www.westwetaskiwinrea.com](http://www.westwetaskiwinrea.com)

For service requests: go to [www.westwetaskiwinrea.com/new-or-changes-to-services.html](http://www.westwetaskiwinrea.com/new-or-changes-to-services.html)

# West Wetaskiwin REA Distribution Tariff (DT)

Breaker Size	Current DT
IDLE	\$43.05
3 kVA (25/41)	\$55.07
5 kVA (35/50)	\$67.19
7.5 kVA (50/75)	\$82.33
10 kVA (75/110; 80)	\$97.47
15 kVA (100/150; 100)	\$127.76
25 kVA (150)	\$188.17

\*The extra charge for demand sites if they go over 25 kVA is \$4.48 per kVA over 25.

\*Note: Distribution Tariffs are subject to change. An increase to the distribution tariff is expected for August 2025. Watch for details in our newsletter.

## West Wetaskiwin Rural Electrification Association – 2025/2026 Board of Directors

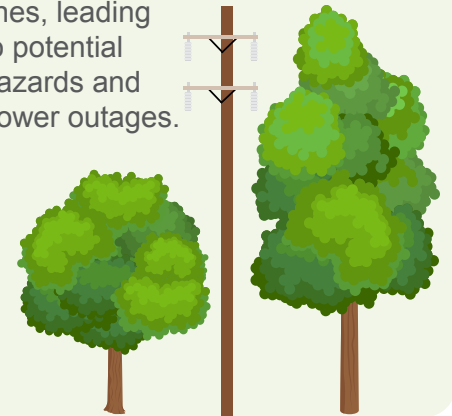
Subsequent to the 2025 Annual General Meeting, following is the current Board of Directors.

Dean Knull	President/Chair
Ron Holmlund	Vice-Chair
Randy Lorentz	Director
Ryan Olthof	Director
Ron Stevens	Director
Dave Watt	Director
Mike Wollin	Director



### Reminder:

When planting vegetation, please do not plant large trees, such as spruce trees, underneath power lines. Spruce trees can reach heights of 60 to over 100 feet. This poses a significant risk of interference with power lines, leading to potential hazards and power outages.



## Interrupted Mail Service Information

In the event of an interruption to mail delivery, we want to ensure that you have access to reliable and convenient methods for paying your bills. **If paper bill delivery is interrupted, please be aware that your bill payment is still due on the Current Charges Due Date.**

To avoid any missed bills or payments, we encourage you to register for e-billing by calling the Battle River Power Coop (BRPC) office at 1 (877) 428-3972. When you switch to e-billing, you'll also save \$1.00 per month in administration fees! Visit [WestWetaskiwinREA.com](http://WestWetaskiwinREA.com) for alternative options that are available to help you manage your account during this time.



Rate of Last Resort (RoLR)



The Rate of Last Resort (RoLR) is a fixed monthly rate set at \$0.13500 per kWh until the end of December 2026. Detailed information on the RoLR is available on: [www.westwetaskiwinrea.com](http://www.westwetaskiwinrea.com).

Members are free to purchase natural gas services or electricity services from a retailer of their choice. For a list of retailers, visit [ucahelps.alberta.ca](http://ucahelps.alberta.ca) or call 310-4822 (toll free in Alberta).