

Our new Online Portal has Launched!

Battle River Power Coop, who handles the billing for WWREA, has launched a brand-new online billing portal.

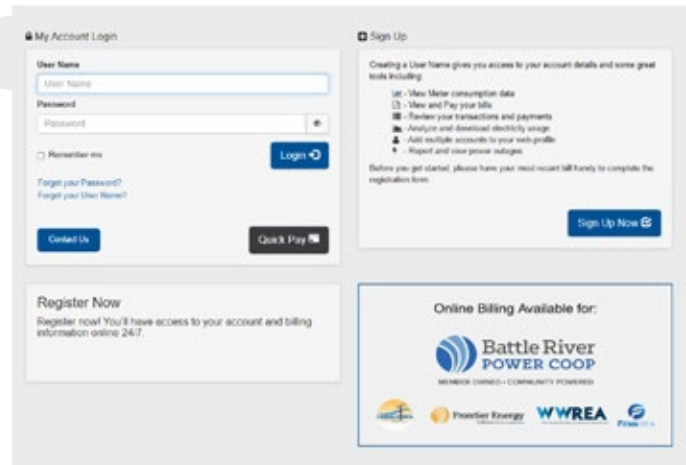
When you create an account, you'll have secure access to your information any time of day, all year round. The portal includes helpful tools such as:

- Viewing your meter consumption data
- Viewing and paying your bills
- Reviewing past transactions and payments
- Analyzing and downloading your electricity usage
- Adding multiple accounts to one profile
- Reporting outages and checking outage status

Please note that our previous billing system is no longer in use.

If you had an online account before, it will not transfer to the new system. You'll need to create a new account in our updated billing portal.

For step-by-step instructions on setting up your new account, visit www.BRPower.coop and look under "Account."



For Power Troubles:

Battle River Power Coop (our distribution system operator)
Toll-free: 1-877-428-3972

For RRO Billing and Account Inquiries:

Battle River Power Coop | Box 1420 Camrose, Alberta T4V 1X3
Toll-free: 1-877-428-3972
E-mail: brpc@brpower.coop | Website: www.brpower.coop

For REA Inquiries, New Service and Service Change Requests:

Contact West Wetaskiwin REA, RR #1
Station Main, Wetaskiwin, Alberta T9A 1W8
Tel: 780-335-9378 (WEST)

E-mail: westwet@telus.net | Website: www.westwetaskiwinrea.com

For service requests: go to www.westwetaskiwinrea.com/new-or-changes-to-services.html

Seeking Board Nominations

West Wetaskiwin REA grew out of rural neighbours working together to bring power to their farms, and it is still owned by its members today. Our Board of Directors is made up of members like you, elected by you, to represent the rural community we share.

Are you or a WWREA member you know passionate about the cooperative way and our service area? We would like to hear from you.

For more details about the nomination process, visit WestWetaskwinREA.com.

Come early at 6:00 p.m. for a meet and greet with your directors. Coffee and other refreshments will be served.



WWREA
WEST WETASKIWIN RURAL ELECTRIFICATION ASSOCIATION

SAVE THE DATE!

Monday, April 13th, 2026

Join us at the Lone Ridge Community Hall for our **2026 Annual General Meeting.**

Tree Cutting and Electrical Safety

The Alberta OHS Code requires companies to contact the power supply authority if work or equipment will come within seven meters of an overhead power line. The authority will identify the line voltage and the required safe limit of approach under the Alberta Electrical Utility Code 2-014.

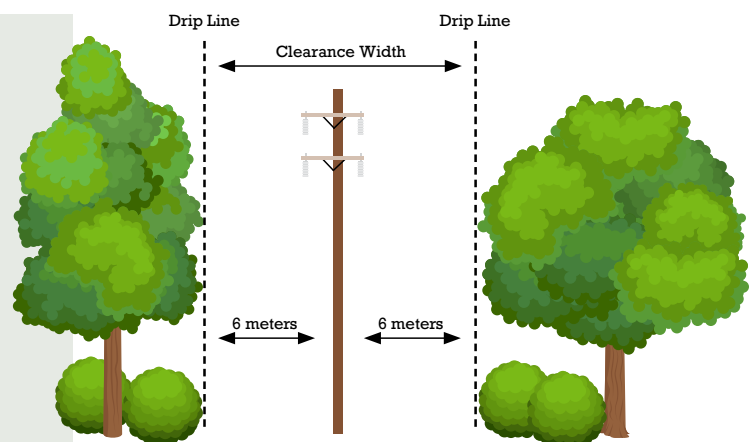
Alberta Municipal Affairs reported 156 incidents in 2023 where trees contacted overhead power lines during felling or brushing, noting the real number is likely higher. Contact with a line can cause fire, property damage, serious injury or death.

Trees several meters from a power line can still fall into the line. If a tree or branch could reach a line while being cut, stop and call your power provider.

Tree pruning or removal near overhead lines must be done by trained Utility Arborists. Within WWREA's service area, contact Battle River Power Coop's Vegetation Management Department at 1-877-428-3972.

Landowners should not prune or fell trees that touch or are near overhead lines because:

- Electricity seeks the quickest path to ground, which can be through tools, trees or people.
- The ground around an energized tree may also become energized.
- Electricity can arc from a line to nearby branches, ladders or equipment, even without direct contact.



Rate
of Last
Resort
(RoLR)



The Rate of Last Resort (RoLR) is a fixed monthly rate set at \$0.13500 per kWh until the end of December 2026. Detailed information on the RoLR is available on: www.westwetaskiwinrea.com.

Members are free to purchase natural gas services or electricity services from a retailer of their choice. For a list of retailers, visit ucahelps.alberta.ca or call 310-4822 (toll free in Alberta).